

# 1 Bligh Street, Sydney



**Project:** Glass & cladding sealant replacement

**Sector:** Facility Management



## Project Overview

A landmark commercial office tower on Bligh Street in the heart of Sydney's CBD required specialist facade remedial works to its atrium structure—an architectural centrepiece composed of triangular, curved, and intersecting glazing panels.

Located approximately 135 metres above the ground floor, the height and complexity of the structure ruled out traditional access methods such as scaffolding or EWPs. The client needed a sealing solution to address deteriorated joints between the glazing and perimeter cladding panels, ensuring water tightness and preserving the aesthetic integrity of the building.

Anchor Safe Rope Access was engaged for our specialist knowledge in remediation of glazed atriums and deteriorated sealants required to achieve a compliant & long-term solution.

### Services

Anchor Safe Rope Access developed and executed a tailored solution, combining rope access expertise with manufacturer-specified sealing systems. Our experienced technicians carried out a precise scope of works to ensure long-term performance and compliance.

The works involved a detailed site measure of the complex glazing geometry, adhesion testing of the Tremco sealant products on glass and metal substrates, surface preparation including washdown and IPA wipe, followed by the installation of Spectrem® Simple Seal over existing joints to bridge gaps between glazing and perimeter cladding, with Tremglaze® 50 applied to ensure a flexible bond; the project concluded with post-cure water ingress testing, final glass cleaning, and full site disestablishment.

Our rope access team worked with precision across difficult-to-reach areas, ensuring every aspect of the job aligned with the manufacturer's installation specifications and met the high standards expected of facade remedial works at this scale.

### Results

The finished atrium is now fully sealed and protected—an excellent outcome of proactive facade maintenance in action. With the application of Spectrem® Simple Seal and Tremglaze® 50, the building's facade is safeguarded against water ingress, temperature stress, and long-term wear.

Anchor Safe Rope Access delivered high-quality results with



minimal disruption, demonstrating why we are among Australia's most trusted facade maintenance specialists. The successful completion of this project reinforces our position as leaders in facade remedial works, delivering safe, compliant, and visually seamless outcomes—no matter how complex the challenge.

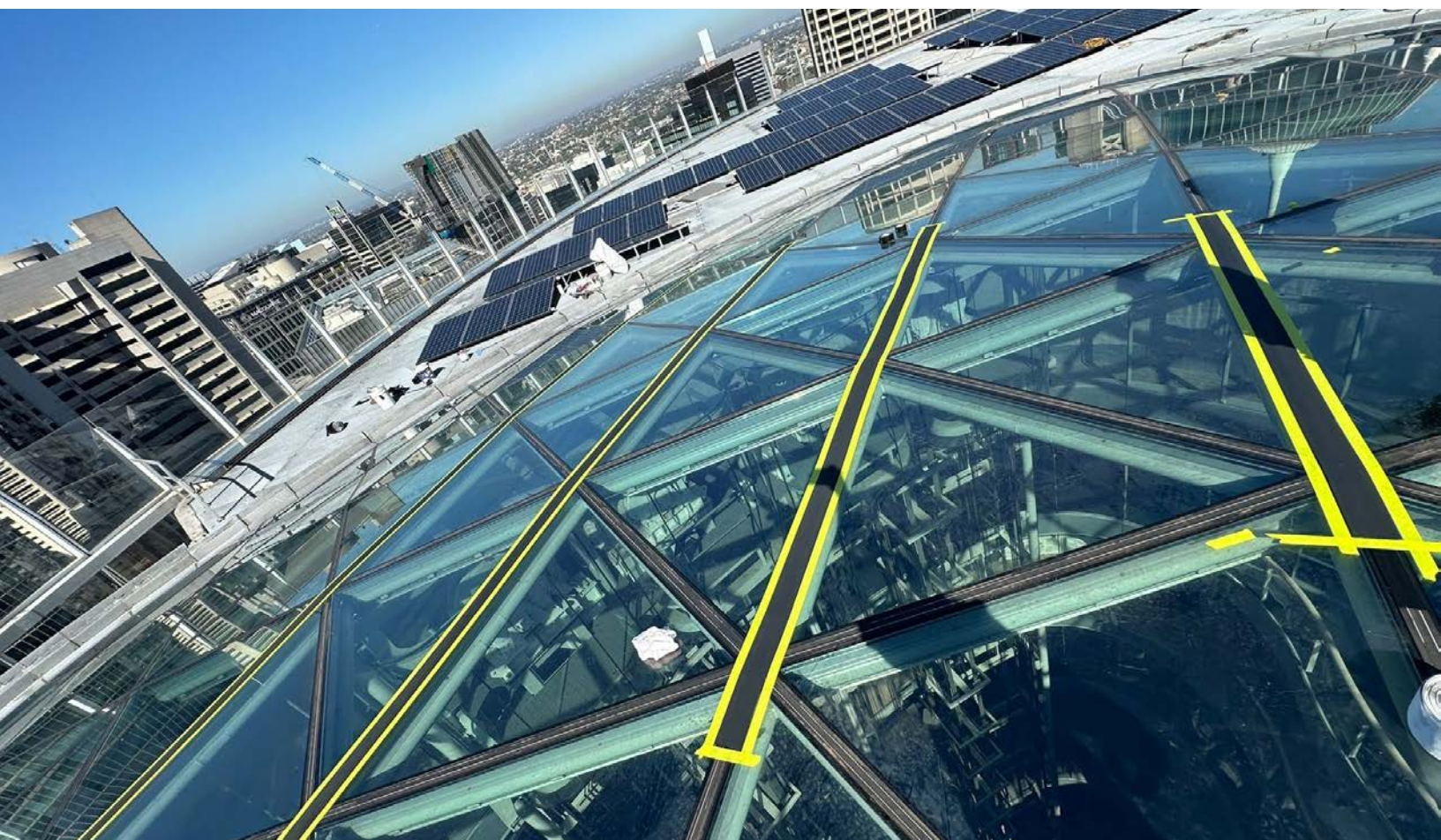


*At Tremco, we're pleased to be able to partner with professionals who not only understand the technical requirements of our products but also execute them flawlessly in complex environments. Anchor Safe Rope Access have demonstrated exactly that during their many atrium restoration projects using our Tremco Simple Seal & Overlay Systems.*

MATTHEW REID, Technical Sales Representative  
NSW | Tremco



Applying the Tremco TREMGlaze 50.



Sealant application in progress





Finished atrium fully sealed and protected



Effective application of the Tremco TREMGlaze 50 and Spectrem Simple Seal



Before shot of the faded & leaking sealant