

The Consort Melbourne



Project: Facade restoration and repaint

Sector: Facility Management



Project Overview

Anchor Safe Rope Access was engaged to deliver a comprehensive proactive maintenance, remedial works, and repainting for a multi-level residential property in Kew, Melbourne. The objective was to restore the building's external appearance, address defects, and improve the long-term durability of the facade while ensuring minimal disruption to residents.

The property features a combination of rendered facade finishes, decorative parapet mouldings, and external architectural elements such as barge boards and downpipes.

Over time, the building had experienced typical weathering and age-related deterioration, including cracking to rendered surfaces and window sills, paint breakdown, and visible efflorescence on unpainted areas. These conditions impacted both the building's appearance and its protective performance, reinforcing the need for a proactive maintenance.

Services

Anchor Safe Rope Access provided a complete solution including labour, materials, and safe access systems to deliver painting, cleaning, maintenance, and remedial works across the property.

Key restoration services included:

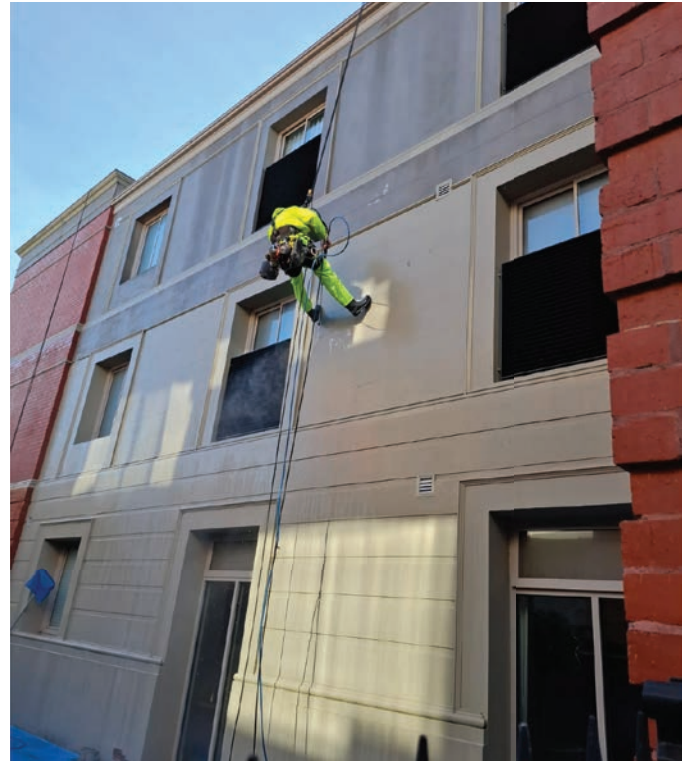
- Parapet Moulding Repairs: Restored cracked and deteriorated mouldings for structural integrity and visual consistency.
- Rendered Facade Repainting: Prepared and coated previously uncoated surfaces to improve durability and appearance.
- External Element Recoating: Repainted barge boards and downpipes to enhance weather resistance.
- Window Sill Repairs: Addressed cracks to prevent further deterioration.
- Paint System Rectification: Removed loose or flaking coatings for a sound substrate.
- Surface Patching & Crack Sealing: Treated minor imperfections and sealed non-structural cracks.
- Facade Cleaning: Light pressure cleaning to remove dirt, mould, and contaminants.

The project was delivered in four key stages:

- **Inspection & Preparation**
Detailed inspection identified defects including cracks, and coating failures. Surfaces were prepared to ensure optimal coating adhesion.
- **Cleaning & Treatment**
High-pressure cleaning removed contaminants, with targeted treatment applied to affected areas to prevent future issues.
- **Repairs & Remedial Works**
Cracks and minor defects were repaired using flexible, compatible systems to ensure durability and allow for building movement.
- **Repainting & Finishing**
All surfaces were primed and recoated using exterior-grade paints, delivering a consistent and long-lasting finish.

Results

The project was delivered successfully, with all works completed safely, efficiently, and to an exceptional standard. The building facade was revitalised, enhancing both its visual appeal and long-term performance.



The communication with Anchor Safe has been absolutely first rate. Dinesh who is the project manager for the job, has been very easy to contact, always come with a solution than a problem. The guys that were on site were very professional, considerate, and quiet but at the same time very friendly and open.

Rope access provides a much tidier solution compared to having scaffolding all around the building. I would definitely recommends Anchor Safe Rope Access.

Chris Puckey, Chairman of The Owners Corporation

